



www.kaziindustries.com

Precision CNC Machine for Engineering Components

About

Kazi industries, established in 1993 is an established manufacturer of precision turned components, fabrications and electro-mechanical assemblies for the Aerospace, Defence, Oil, Marine, Process & Nuclear industries (among others).

Kazi Industries specializes in the manufacture of precision machine components in a wide variety of materials i.e, Stainless steel ,Titanium ,Nickel alloy, heavy alloys, 316, 304 Stainless steel, Brass, Bronze ,Aerospace special steel for a wide range of apps including Aerospace. It is approved to BS ISO 9001-2000& AS9100.

We specialized in the high speed CNC Machining of complex components from a variety of materials including Titanium, Plastics, aluminum, stainless steel and other special alloys. Quantity can vary from small batches and prototypes to quantities of up to a thousand.

What we offer

- Aerospace precision machined components.
- CNC machined components
- Automotive engine and speedometer parts.
- Hydraulic parts
- Blow moulds & parts.
- We work with any special alloys : Inconel 718, Hastaloy X, Stainless Steel (all varieties) , Titanium T17, etc.
- We have deep engineering strength which has come from years of experience and our training programs.
- As a result of decades of continuous improvement, we have the top 10% of quality and lowest 10% on price

Our Speciality

- CNC Turning and VMC machining parts
- Low & Medium batch quantities – 100 to 1000 per batch/month (Medium and large parts)
- High volumes possible – 1000 to 1,00,000 per month (small, intricate parts)
- Extremely critical parts – even sub-assemblies – we like challenges

MACHINE DETAILS.

- CNC TURNING CENTRES NAMELY MAZAK,MORI SCIKYI,LMW-----40 NOS.
- VERTICAL MACHING CENTRES NAMELY,--MAZAK,BFW,MORI SCIKY-8 NOS.
- VERTICAL MACHING CENTRES WITH 4 AXIS – 4 NOS.
- CNC SURFACE GRINDING JAAPAN MAKE – 2 NOS.
- PRAGA THREAD ROLLING UP TO 25 MM – 1NOS.

INSPECTION EQUIPMENTS.—

TRIMOS 600 MM L.C -0.0001 MM
PROFILE PROJECTOR –MICROTECNICA
SURFACE PLATE.
ROCKWELL HARDNESS TESTER.

Facilities

- Hitachi Sikai & LMW KODI 55
Table size: 1000*500*500
No. of Tools: 25 nos.
No. of machines : 2



Facilities

□ LV 55

Stroke:

X Axis 575 mm

Y Axis: 410 mm

Z Axis: 460 mm

Distance from spindle nose to table top:

140 – 600 mm

Table:

Table working surface: 900 x 430 mm

No of T Slots x Pitch: 4 x 100 Nos.x mm

Max. weight on table: 400 kg

Spindle:

Spindle bore taper: BT – 40 Type

Spindle speed: 6000 Rpm

Spindle Motor power: 11 / 7.5 kW



Facilities

- MAZAK 6T WITH BAR FEEDER (NEW ADDITION)

Max. chuck dia. 165 mm.

Spindle RPM: 6500

Bar feed dia.: 32 mm

Turret-Electromechanical tools: 8.

No. of machines: 3 nos.



Facilities

□ LL25T L5

Capacity

Swing over carriage 340 mm

Chuck dia max 250mm

Interference free turning diameter 265 mm

Max. turning length 480 mm

Admit between centres 595 mm



Facilities

- **Cnc colchester lathe. M/C- 4 Capacity**



- **LMW CNC PRECISION LATHE**



Facilities at a glance



Inspection Facilities

- **Profile projector: Version Orion 400 V**

It is intended to check small or thin parts placed directly on the glass table insert.

L.C.: 1 micron

Screen Size: 400 mm



- **Profile projector: Version Orion 400 V**

It is intended to check small or thin parts placed directly on the glass table insert.

L.C.: 1 micron

Screen Size: 400 mm

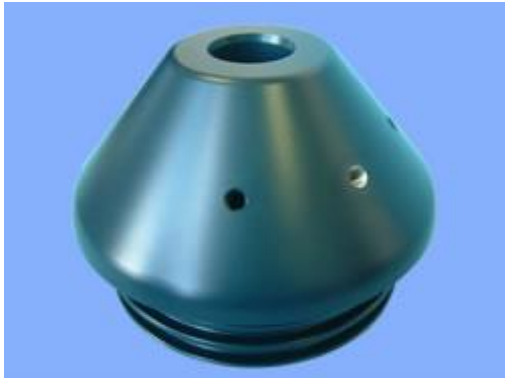
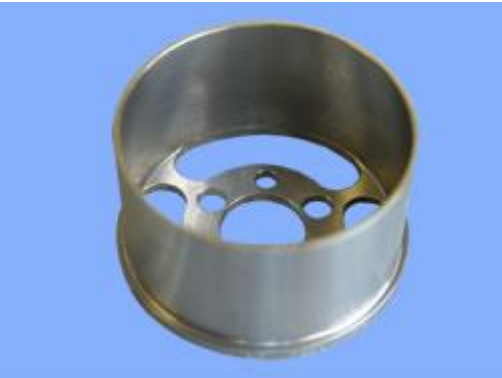
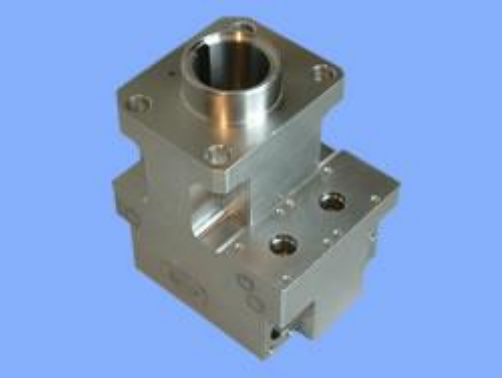


Inspection Facilities

- **Quality Control Dept. Equipped with**
 - Rock well Hardness Tester
 - Surface Plate
 - Bench Centre
 - Air Gauges (L.C.: 1 micron)
- **Measuring instruments (Digital):**
 - Ranging from 0 – 300 mm (L.C. 1 micron).
 - of Mitutoyo make is used duly calibrated for inspection.



Aerospace Components



Critical parts developed



Critical parts developed



Critical parts developed

- **Boss Export to USA OEM (labour basis)**

Application : Aerospace

Criticality –Hard material

Weight – 100 gms

Quantities : 300 per month



- **Mould insert to OEM**

Application : Moulds

Criticality – Thin-walled & carved out by
CNC programming

Weight – 23 gms

Quantities : 100 NOS



Critical parts developed

- **Aerospace Export to USA OEM (labour basis)**

Application : Aerospace

Criticality – Close geometrical tolerances

Weight – from 3 gms to 25 gms – 20 parts

Quantities : 1000 per month(each)



Client List

- **Godrej & Boyce Manufacturing Company LTD.**
Mumbai India (Aerospace Company)
- **ASB International Ltd. Mumbai India**
100 % Export oriented unit Japanese company
- **Bharat Electronics Ltd.**
(Honoured with a cash award & Certificate for import substitute)
- **Foote Axles, USA**
- **SMC Sarl Decoprem, France**
Aerospace Company
- **Vega, Italy**
- **Schneider Aerotech, Switzerland**
Aerospace Company

Team



- **Feeroz H. Kazi**
Designation: CEO,
Qualification: B.E Production
Experience: 31 years



- **Ayub H.Kazi**
Designation: Director
Qualification: B.E Prod.
Experience: 28 years

Contact Details



Kazi Industries,

289, Near Shivaji Statue,

Pune - 411038, India.

Mr. Feeroz Kazi (CEO)

e-mail id : feeroz@kaziindustries.com

Phone : +91-20-25381995,

Cell : +91 9822034799

Fax : +91-20-25381232

Website : www.kaziindustries.com